

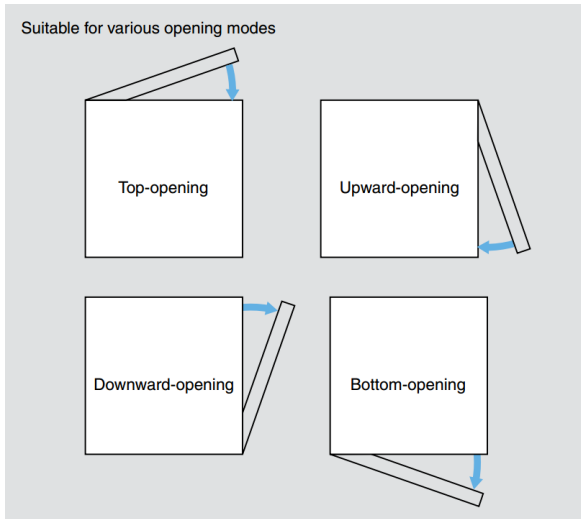
GURD8-3 Rotary Damper

Features

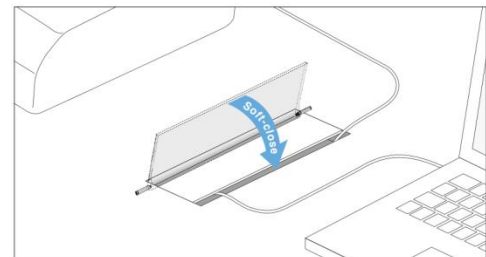
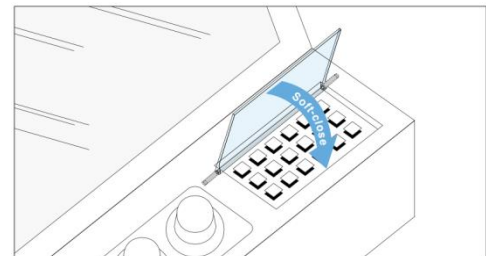
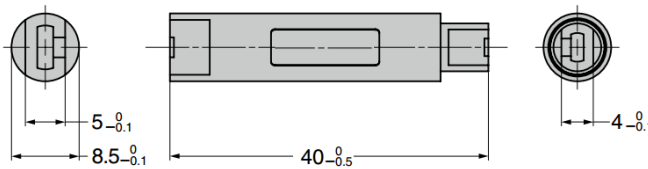
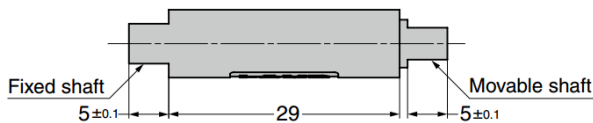
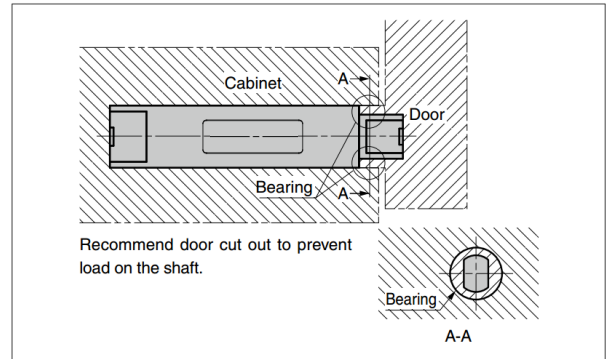
- Insert type rotary damper
- Unlimited rotation angle and rotation direction, suitable for various opening modes
- Small outer diameter provides saving of space
- Can be used in combination with springs
- Suitable applications include switch covers for equipment

Notes

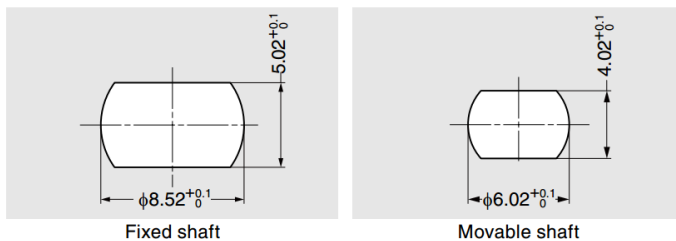
- Operating temperature: 0°C ~ 50°C
- Test conditions: ambient temperature ~23°C, rotation speed 20 rpm



Installation



Cut Out Dimensions



Part No.	Material	Colour	Torque (per piece)	
GURD8-3	POM	Natural	0.022 ~ 0.038 N.m	0.22 ~ 0.39 kgf.cm